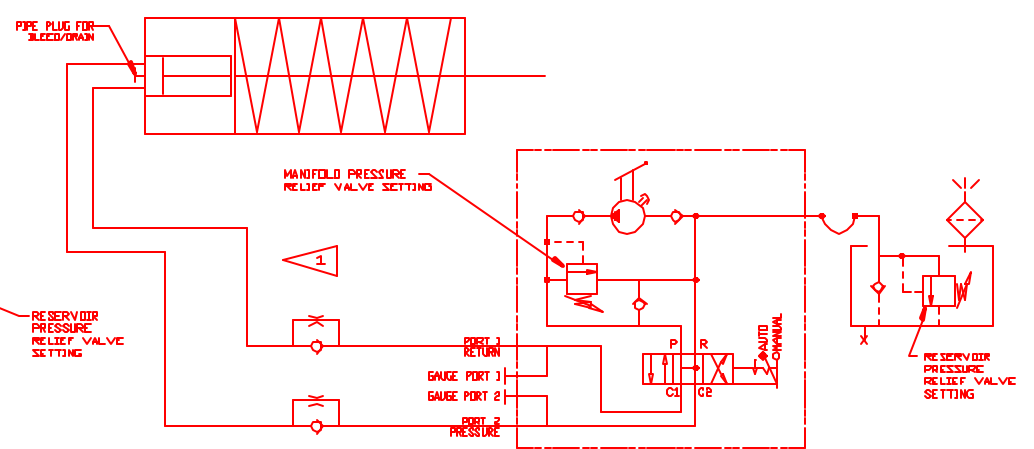
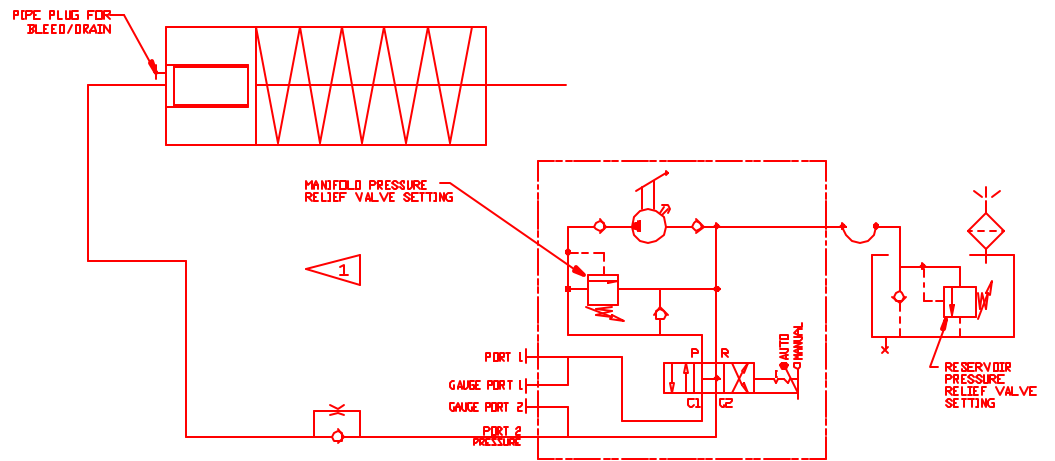


**M11 - DA**  
(ALL DOUBLE ACTING G, T'S, HD'S)



**M11 - SR-PSTN**  
(HD, T'S AND G7-G10)



**M11 - SR RAM**  
(ONLY G2-G5)

ACTUATOR	PRESSURE RELIEF VALVE SETTINGS	
	MANIFOLD	RESERVOIR
HD SR	250 PSI	33
HD DA	350 PSI	33
T DA / TR DA / TRQ IA	1000 PSI	200
T3SR/ T4SR/ T5SR2,3,4&5 T8SR3,4&5/ TRSR/ TRQSR	1500 PSI	200
T5SR1 / TBSR1&2	2000 PSI	200
G SERIES	3000 PSI	200

**NOTES:**

- 1 OPTIONS:
  - > ONE FLOW CONTROL
  - > AUTO RESET
  - > SUBMERGED TRIM
- 2 OPTIONS:
  - > 2 FLOW CONTROL
  - > AUTO RESET
  - > BYPASS, INCLUDING 2 FLOW CONTROL
  - > SUBMERGED TRIM