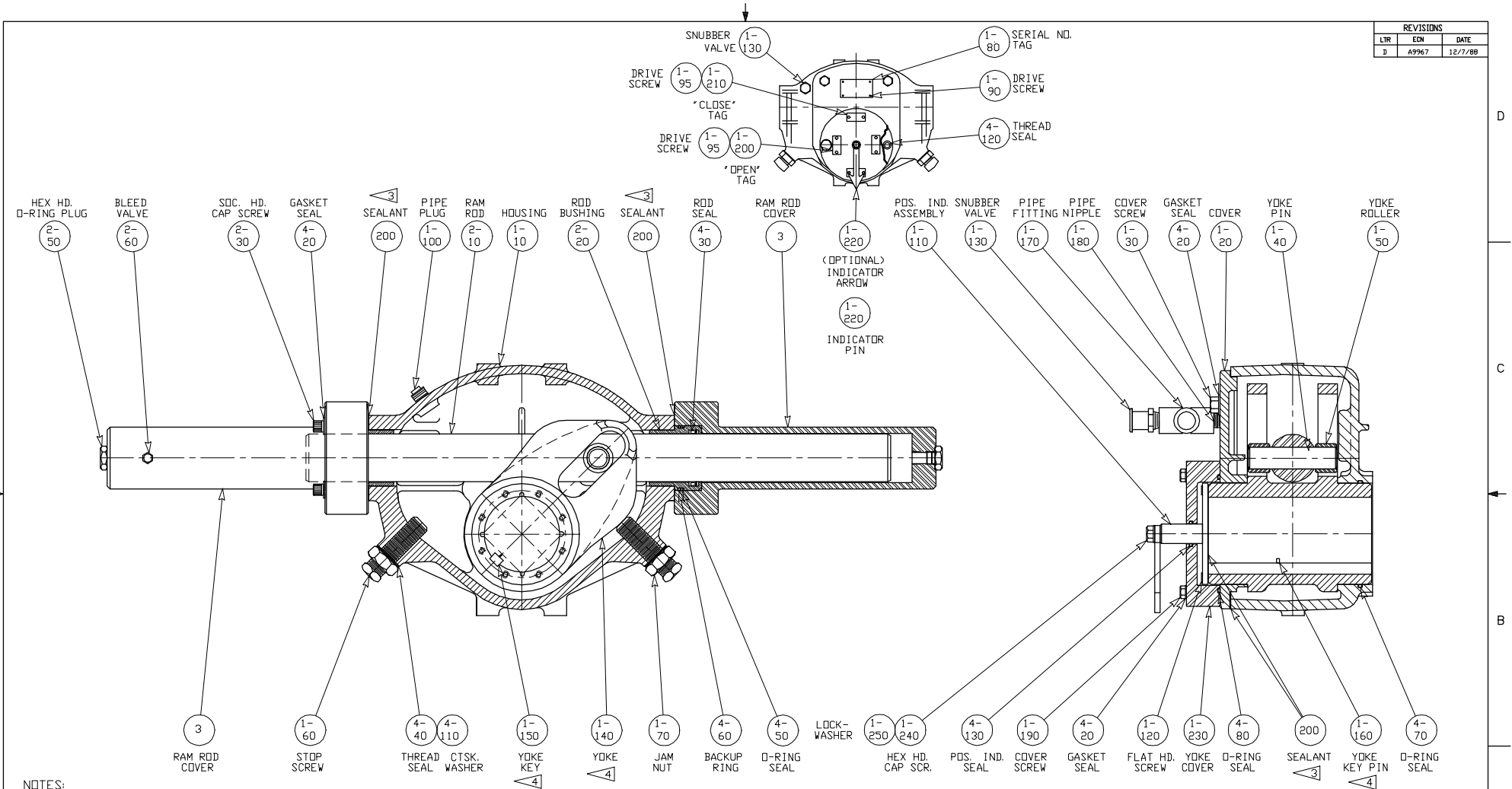


REVISIONS		
LTR	ECN	DATE
D	A9967	12/7/88



NOTES:

- 1.) ALL PARTS SHOULD BE INSPECTED AND CAREFULLY CLEANED TO REMOVE ALL DIRT AND OTHER FOREIGN MATTER.
- 2.) APPLY LUBRICANT (500) TO ALL COMPONENTS BEFORE ASSEMBLY.
- 3) PRIME AND APPLY SEALANT (200) PER ES-10 TO ALL SURFACES MARKED 3 PER INSTRUCTIONS ON SEALANT PACKAGE.
- 4) THE YOKE (1-140) IS FURNISHED AS FOLLOWS:
 - A. STANDARD CATALOGED BORE AND KEYWAY WITH YOKE KEY (1-150) AND YOKE KEY PIN (1-160).
 - B. OPTIONAL- YOKE MODIFICATION TO CUSTOMERS REQUESTED BORE AND KEYWAY, ITEMS (1-150) AND (1-160) NOT BEING PROVIDED.
 - C. OPTIONAL- YOKE PROVIDED WITH AS CAST SQUARE THRU BORE.

DRAWN BY:	G. V. D.	DATE:	12/7/88
CHECKED BY:	JR		12/88
APPROVED BY:	FAM		12/88
THIS DOCUMENT AND THE DATA DISCLOSED HEREIN OR HEREWITH IS NOT TO BE REPRODUCED, USED OR DISCLOSED IN WHOLE OR IN PART TO ANYONE WITHOUT THE PERMISSION OF BETTS.			
SALES ORDER:	CAD GENERATED DRAWING <input checked="" type="checkbox"/>		

TITLE:
ASSEMBLY DRAWING:
H251. 5-S AND
H352. 1-S ACT.
(SUBMERGED)

BETTS Actuators & Controls		
PART NO.	072927	
SCALE	DWG. SIZE	D
NONE	D	D
SHEET	1 OF 1	REV.