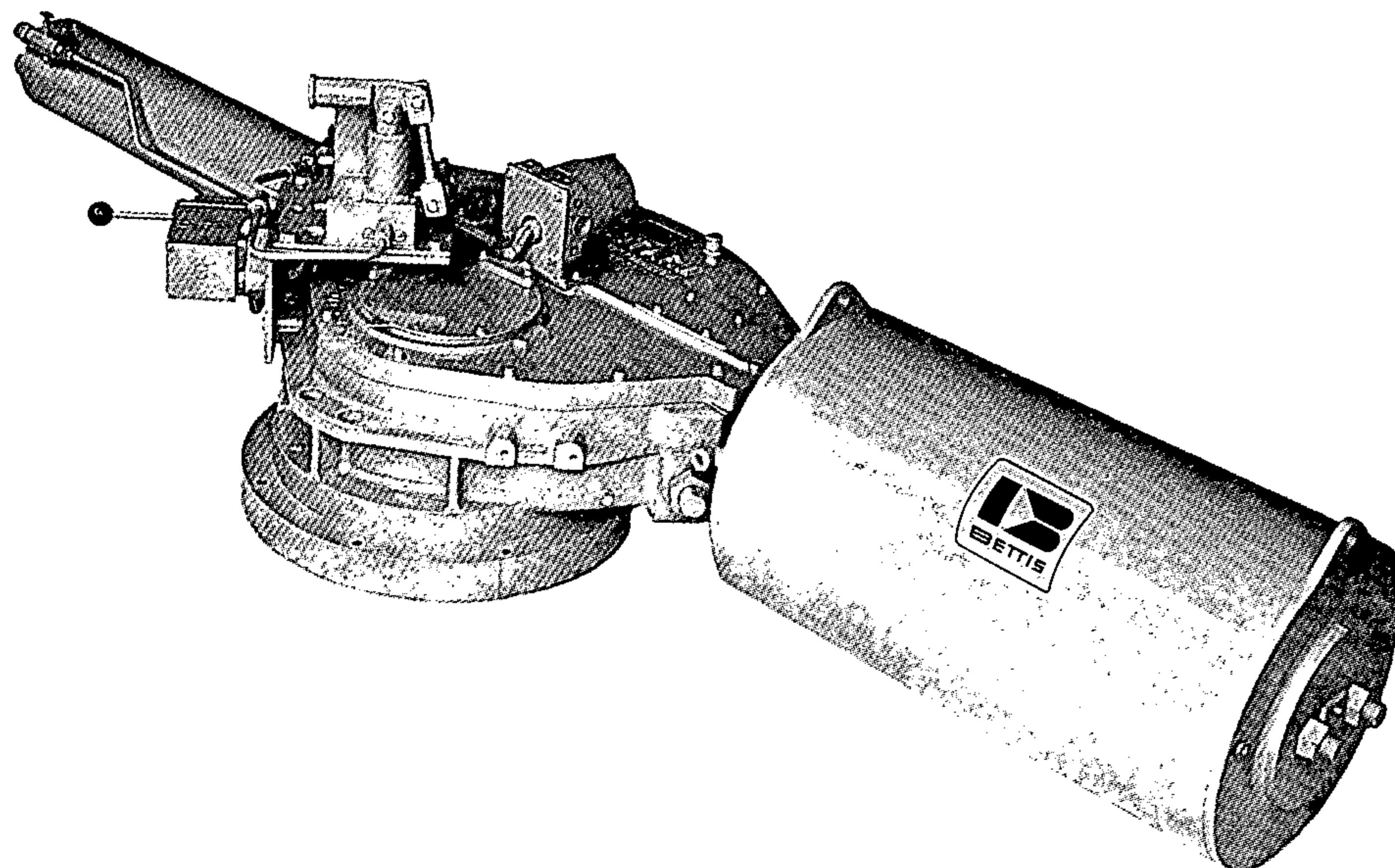




ROTARY VALVE ACTUATORS



FOR BALL, PLUG AND BUTTERFLY TYPE VALVES

**T-5 AND T-8 SERIES
FOR PNEUMATIC AND
HYDRAULIC APPLICATIONS**



3100 FALL AT GRAND • P. O. BOX 14689
PHONE: (713) RI 8-1143 • HOUSTON, TEXAS 77021
TELEX: 76-2713



TORQUE OUTPUT
BETTIS VALVE ACTUATORS
T-5 and T-8 SERIES
STANDARD MODELS

ACTUATOR MODEL	OPERATING PRESSURE — PSIG											
		40	50	60	70	80	90	100	125	150	200	250
T-512	BREAK	42000	52500	63000	73500	84000	95000	105000	131500	158000	211000	
	RUN	23000	29000	35000	41000	47000	52500	58500	73000	87500	117000	
T-516	BREAK	68000	85000	102000	119000	136000	153000	170000	213000			
	RUN	37500	47000	56500	66000	75500	85000	94500	118000			
T-520	BREAK	108500	135500	162500	189500	217000						
	RUN	60000	75000	90500	105000	120000						
T-812	BREAK	61000	76500	92000	107000	122500	138000	153000	191000	230000	306000	383000
	RUN	34000	42500	51000	59500	68000	76500	85000	106000	127500	170000	212000
T-816	BREAK	99000	124000	148500	173500	198000	223000	248000	310000	371000		
	RUN	55000	69000	82500	96500	110000	124000	137500	172000	206000		
T-820	BREAK	157500	197000	236000	276000	315000	354000	394000				
	RUN	87500	109500	131000	153000	175000	197000	219000				

HIGH PRESSURE MODELS

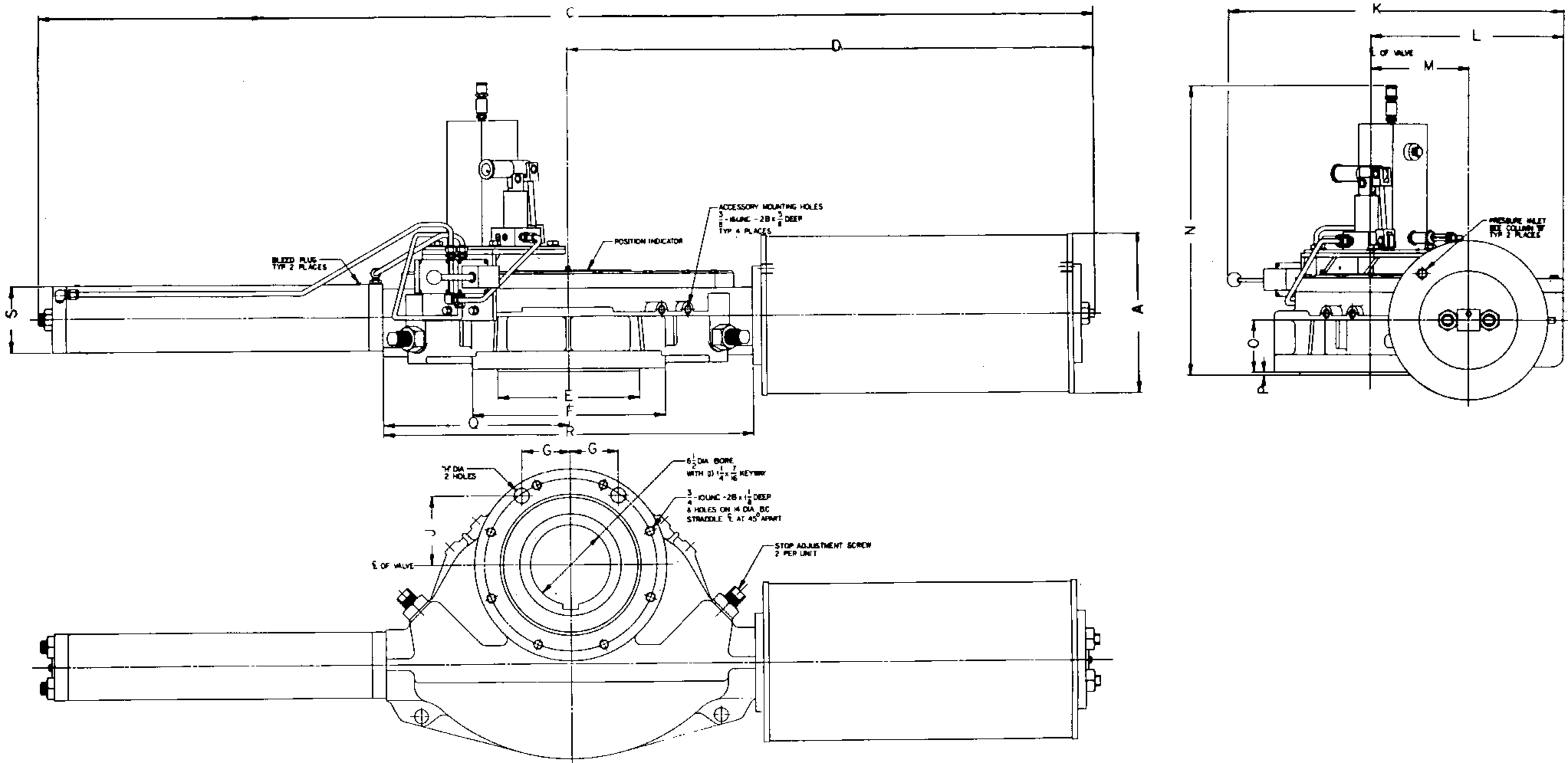
ACTUATOR MODEL	OPERATING PRESSURE — PSIG											
		500	600	700	800	900	1000	1200	1400	1600	1800	2000
T-505	BREAK	71400	85700	100000	114000	128000	143000	171000	200000			
	RUN	39700	47600	55600	63500	71400	79400	95000	111000			
T-507	BREAK	157000	188000	220000								
	RUN	87000	104000	122000								
T-805	BREAK	103000	124000	145500	166000	187000	208000	250000	291000	332000	374000	416000
	RUN	57700	69000	80800	92400	104000	115500	138000	161000	185000	208000	231000
T-807	BREAK	228000	274000	320000	366000	412000						
	RUN	127100	152600	178000	203000	228000						

MODEL (1)	DISPLACEMENT PER STROKE		APPROXIMATE WEIGHT LBS. (2)	MAXIMUM TORQUE OUTPUT (IN-LBS)	PRESSURE TO DEVELOP RATED TORQUE OUTPUT (PSIG)	MAXIMUM TEST PRESSURE (3) (PSIG)
	CU. IN.	CU. FT.				
T-505	216	.125	410	225,000	1573	2360
T-507	423	.244	450	225,000	714	1070
T-512	1325	.767	570	225,000	213	320
T-516	2100	1.215	690	225,000	132	200
T-520	3325	1.922	820	225,000	83	125
T-805	314	.182	500	450,000	2160	3240
T-807	614	.355	540	450,000	982	1470
T-812	1925	1.113	660	450,000	294	440
T-816	3050	1.763	785	450,000	181	270
T-820	4820	2.786	925	450,000	114	170

(1) Units intended for hydraulic service should be ordered with hydraulic bleed plugs.

(2) Add 120 lbs. for units equipped with M-2 manual hydraulic override. Add 85 lbs. for units equipped with hydraulic speed control (no manual override).

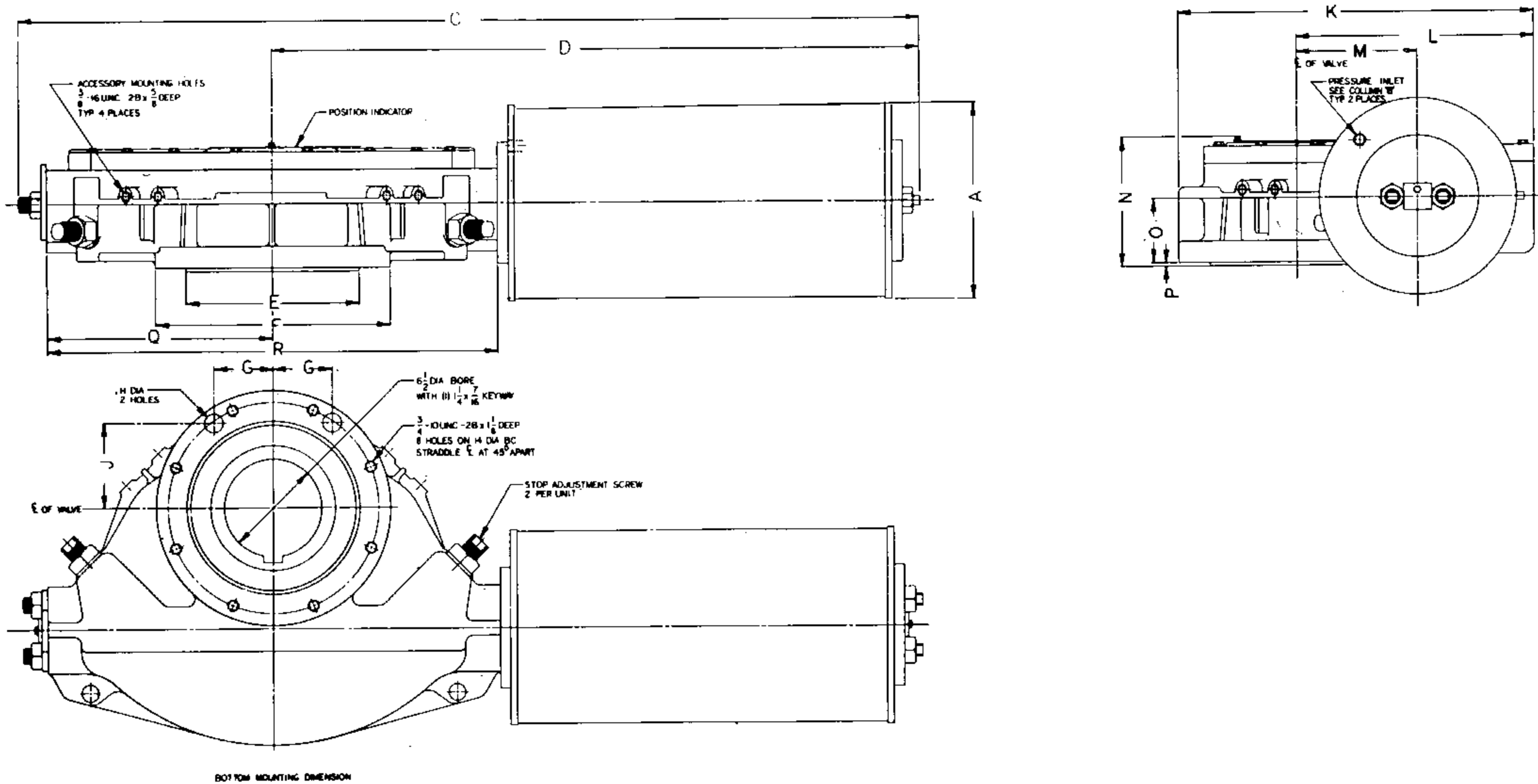
(3) Maximum test pressure is the maximum allowable static pressure with the actuator fully stroked and against the travel stops.



MODEL NO	A	B	C	D	E	F	G	H	J	K	L	M	N	O	P	Q	R	S
T 512 M2	13	1/2 NPT	68 1/2	34 1/4	13000 12995	15 5/8	N/A	N/A	N/A	22 7/8	12 1/16	5 1/2	25 1/8	4 13/16	1/4	12	24	5 3/8
T 516 M2	16 1/4	3/4 NPT																
T 520 M2	20 1/4	3/4 NPT																

MODEL NO	A	B	C	D	E	F	G	H	J	K	L	M	N	O	P	Q	R	S
T 812 M2	13	1/2 NPT	86	43	11500 11495	15 5/8	3.944	1126 1129	5.632	27 3/8	15 3/4	8	24 1/2	4 3/16	1/4	15	30	5 3/8
T 816 M2	16 1/4	3/4 NPT																
T 820 M2	20 1/4	3/4 NPT																

T-5 AND T-8 MODELS (WITH HYDRAULIC MANUAL)



BOTTOM MOUNTING DIMENSION

MODEL NO	A	B	C	D	E	F	G	H	J	K	L	M	N	O	P	Q	R
T 505	5 3/8	3/8 NPT															
T 507	7 1/2	3/8 NPT															
T 512	13	1/2 NPT	48 1/16	34 1/4	13000 12995	15 5/8	N/A	N/A	N/A	19 7/8	12 1/16	5 1/2	9 3/16	4 13/16	1/4	12	24
T 516	16 1/4	3/4 NPT															
T 520	20 1/4	3/4 NPT															

MODEL NO	A	B	C	D	E	F	G	H	J	K	L	M	N	O	P	Q	R
T 805	5 3/8	3/8 NPT															
T 807	7 1/2	3/8 NPT															
T 812	13	1/2 NPT	60	43 3/8	11500 11495	15 5/8	3.944	1126 1129	5.632	23 9/16	15 3/4	8	8 29/32	4 3/16	1/4	15	30
T 816	16 1/4	3/4 NPT															
T 820	20 1/4	3/4 NPT															

T-5 AND T-8 MODELS (LESS MANUAL)